

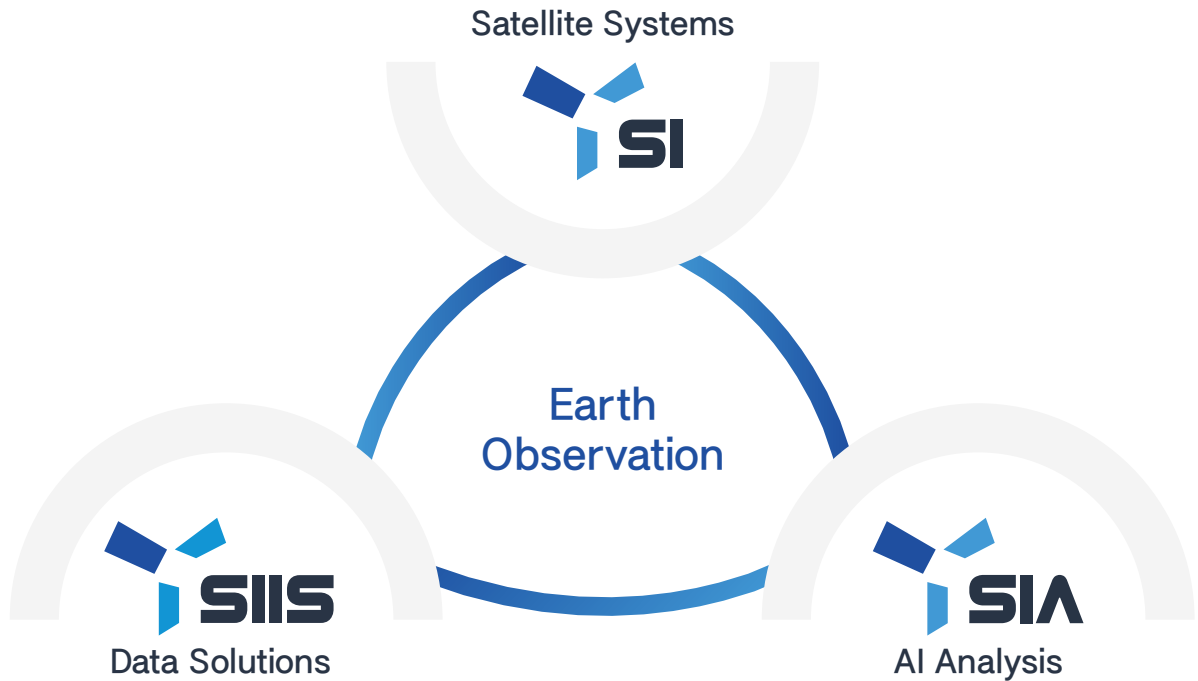
SpaceEye-T

SENSING TO INTELLIGENCE

Expected Launch	2024
Product Resolution	PAN 0.3 m / MS 1.2 m
Benefit	100 % Commercial



SENSING TO INTELLIGENCE



What Industries **NEED** This?

-  **Mapping**
-  **Infrastructure**
-  **Oil & Gas Facilities**
-  **Agriculture**



Creating Maps for Various Purposes
Creating Precise DEM/DSM



Large-Scale Infrastructure
Urban Change Detection
Economic and Urban Planning



Estimating Crude Oil Volume
Facility Site & Construction



Operating Farmland
Monitoring Growth Status of Crops
Smart Farm

0.3m VVHR Electro-Optical Satellite

Manufacturer	•	SI
Operator	•	SIIS
Expected Launch Date	•	2024
Altitude	•	600 km
Spectral Bands	•	PAN / 4MS
Product Resolution	•	PAN 0.3 m / MS 1.2 m
Data Quantization	•	12 bit
Swath Width	•	14 Km
Collection Capability	•	300,000 km ² / day



Maritime



Disaster Counterplan



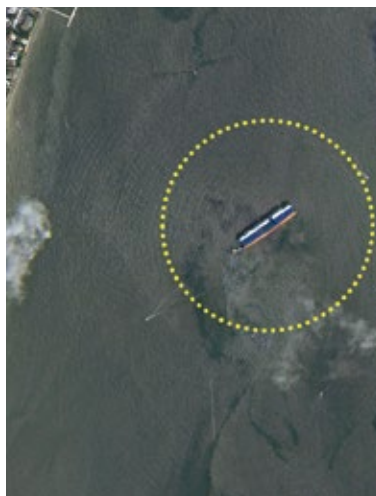
Forestry & Environment



Defence & Military



Illegal Vessel Detection
Oil Spill & Ship Accidents



Identifying Global Disasters
Climate Change and
Environmental Issues



Investigating Vegetation State
Managing Forests & National Parks
Observing Glaciers & Rainforests



Identifying Military Facilities
Acquiring Geographic Information

✦ From Earth Observation to Value Creation



Ovision

Operational Analysis-Ready Platform

ATR & ACD
·Auto Target Recognition
·Auto Change Detection



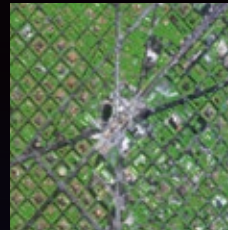
Estimate Car Export



Measure GHG with Satellite Data & ML



Grid & Pattern Extraction



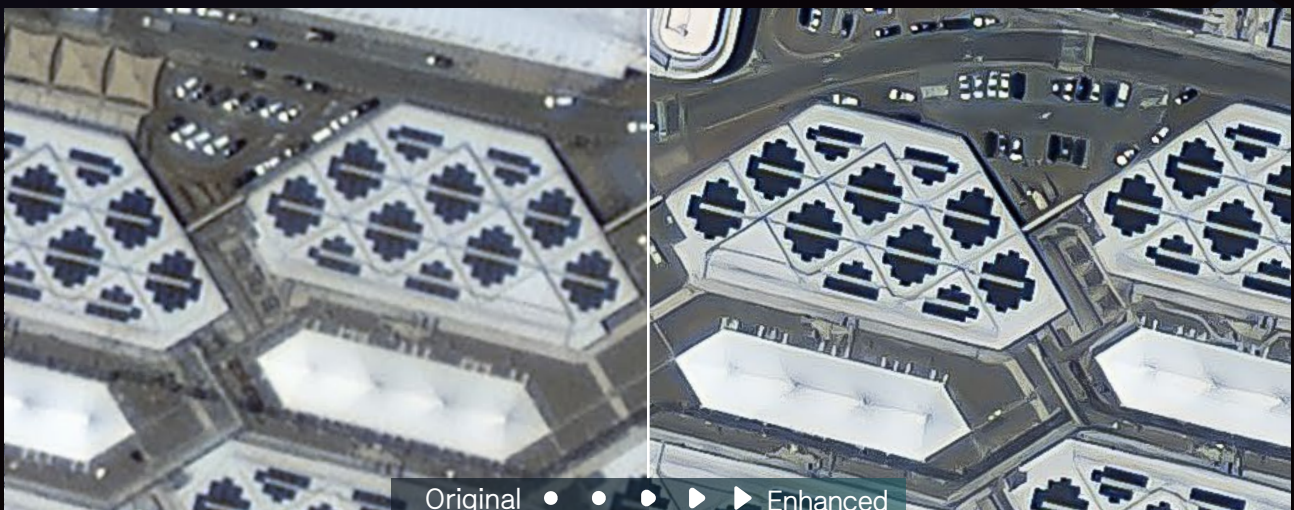
Crop Yield Forecast



Daily 1.2M km2 analysis capability with 11 petaflops of AI Analytics Infrastructure

Super Enhancement

We can make more sharper, clear EO images



For whom want to see a clearer image and get more information.